



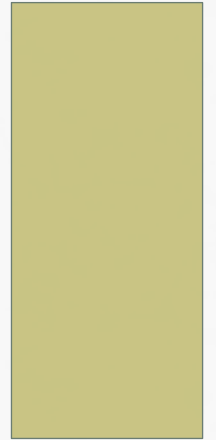
National Parks

By: Mrs. OVD's Second Grade Class



CONGAREE NATIONAL PARK

BY:
BECKETT



LOCATION

- South Carolina



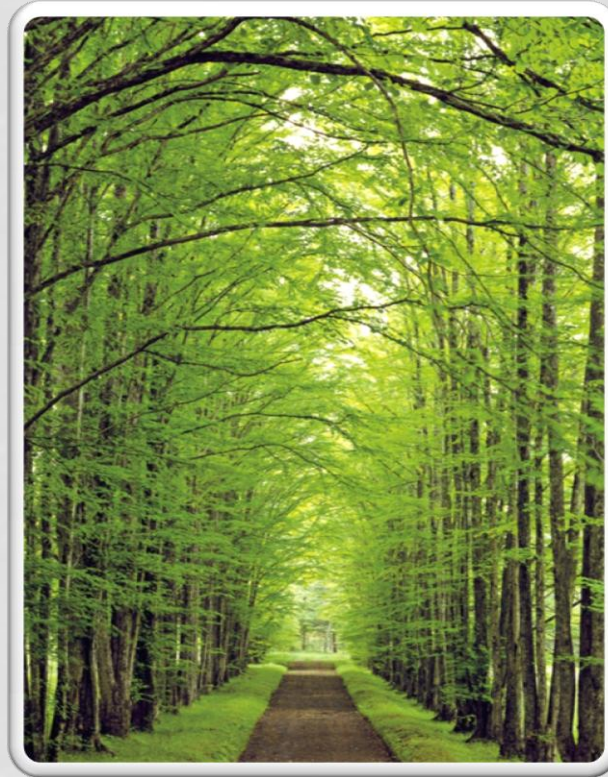
DATE OPENED

- 2003



KNOWN FOR

- State champion trees



SIZE

- More than 2600 acres



WHEN TO VISIT

- Park is open 24/7
- Visitor center 9:00am-5:00pm



FIVE THINGS TO SEE

- Birds
- Insects
- Plants
- Trees
- Flooding



FIVE THINGS TO DO

- Canoe on Cedar Creek
- Junior Ranger project
- Take a hike
- Fishing
- Camping



WHY I CHOSE THIS PARK

- Because its a swamp and I like swamps.



GLACIER BAY NATIONAL PARK

BY: CALEB



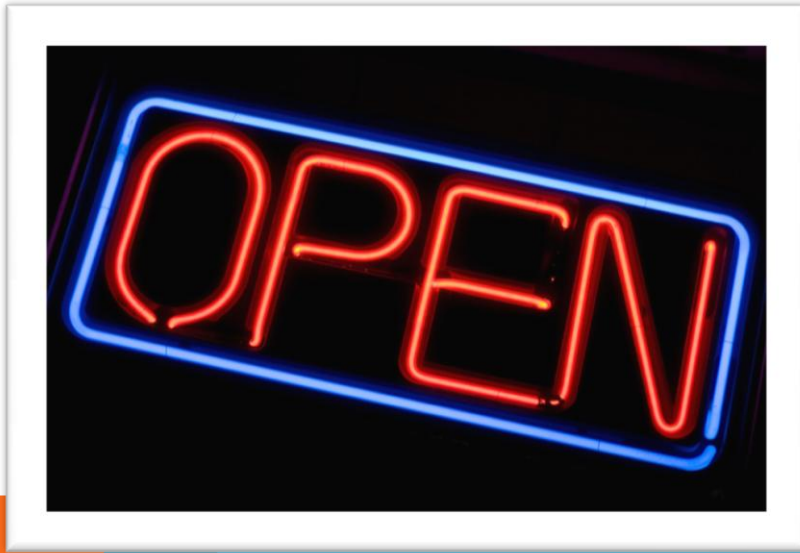
LOCATION

Alaska



DATE OPENED

It opened on December 2,1980.



KNOWN FOR

Its glaciers and its mountains



SIZE

5,130 square miles [13,287 km]



WHEN TO VISIT

May-September



FIVE THINGS TO SEE

Animals

Mountains

Fjords

Glaciers

Rainforest



FIVE THINGS TO DO

Explore

Find a cabin

Go ice fishing

Climb a mountain

Find glaciers

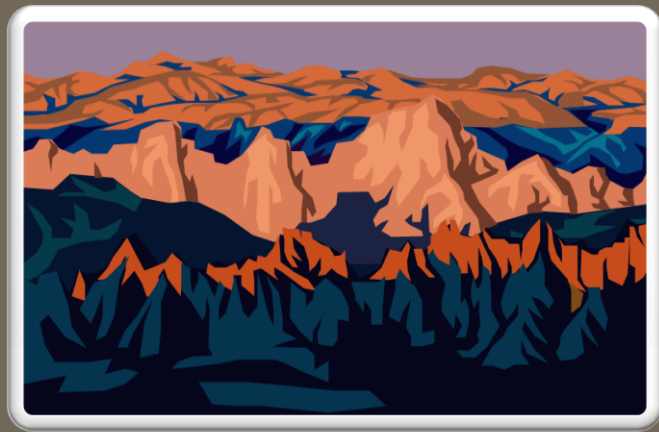


WHY I CHOSE THIS PARK

It is very ,very cool.



COOL

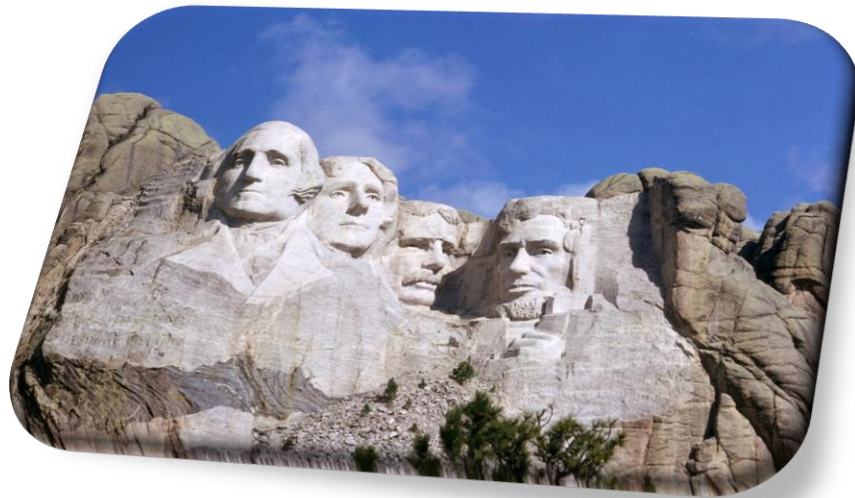


Badlands National Park

By:
Carah

Location

- South Dakota



Date Opened

November 10, 1978



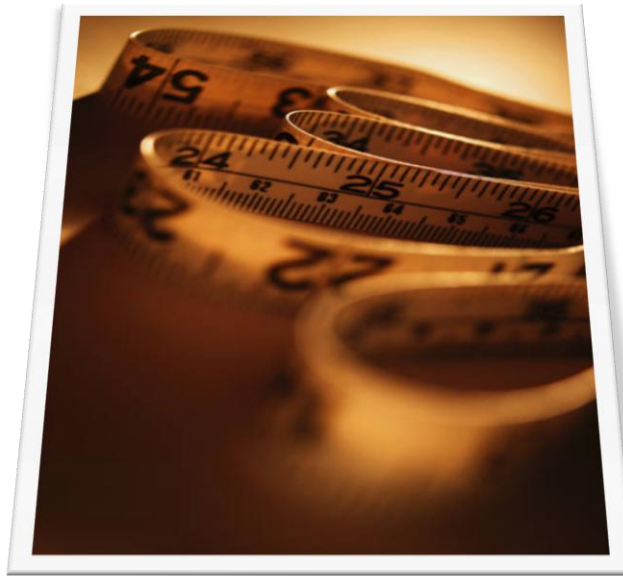
Known For

- The beauty of the rocky Badlands



Size

244,000 acres



When To Visit

All day all year except Christmas,
Thanksgiving and New Years' Day



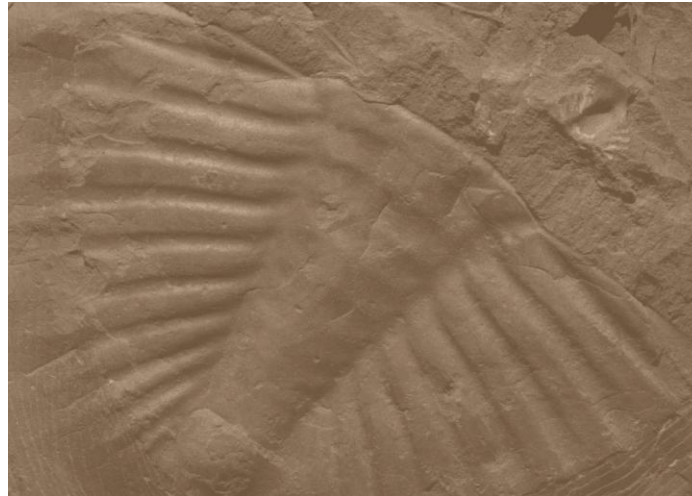
Five Things to See

- Prairie dogs
- Buffalo
- Mountain goat
- Elk
- Bighorn sheep
- Rock formations



Five Things To Do

- Climb on the rock formations
- Try to catch prairie dogs
- Go hiking
- Go to museums and look at fossils
- Go camping



Why I Chose This Park

Because I`ve been there and I really liked it!





Yellowstone National Park

By:
Caroline

Location

- Wyoming, Montana, Idaho



Date Opened

Opened in 1872



Known For

- Yellowstone is famous for old Faithful, geysers, and hot springs.



When To Visit

It is open every day.



Five Things to See

- Watch the geysers
- Watch Old Faithful
- Visit the hot springs
- Visit Lake Village
- Visit West Thumb



Five Things To Do

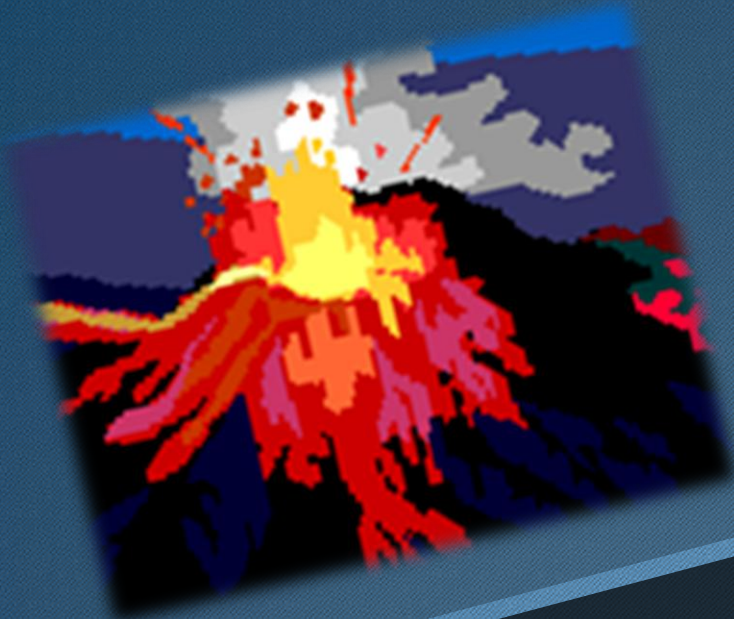
- Day hiking
- Camping
- Wildlife viewing
- Horseback riding
- Fishing



Why I Chose This Park

- I picked this park because there are many things to see and do.



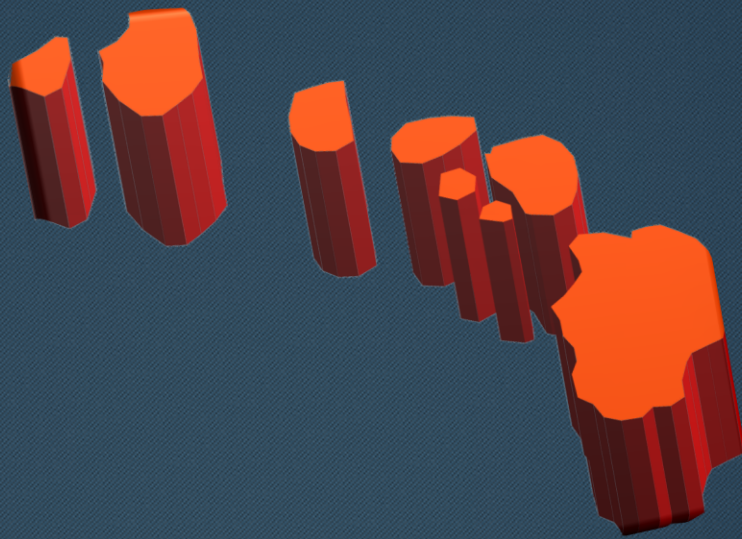


Hawaii Volcanoes National Park

By:
Dominic

Location

Hawaii



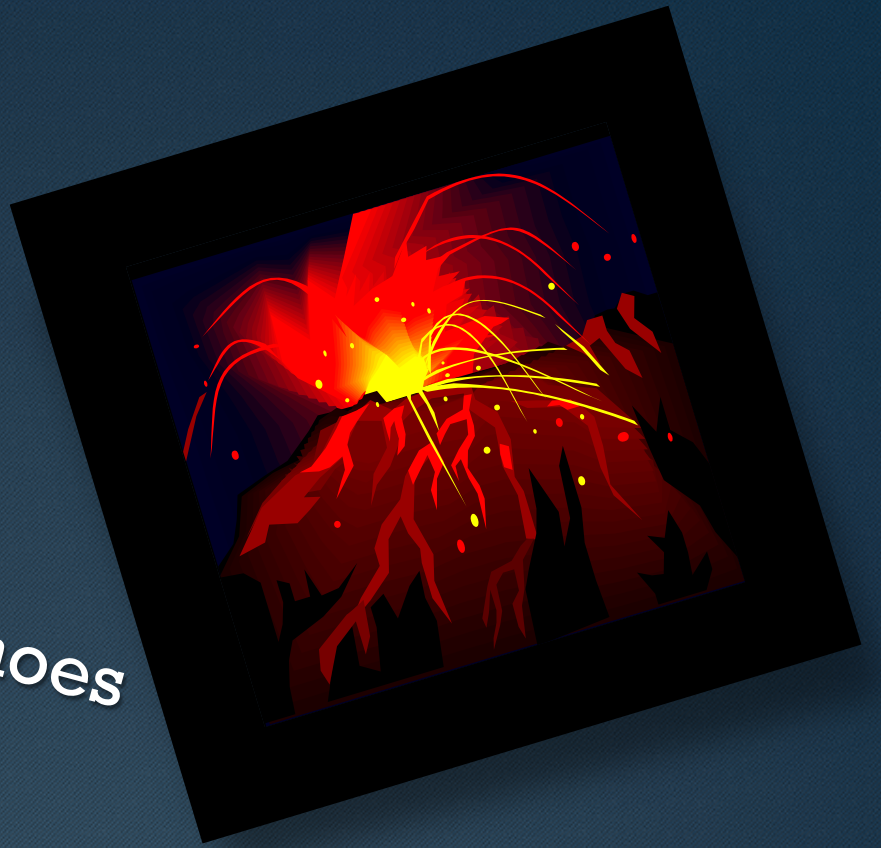
Date Opened

August 1, 1916



Known For

Volcanoes



Size

323,431,38 acres



When To Visit

7:45am – 5:00pm



Five Things to See

Volcanoes

Smoke

Lava

Lavarock

Craters



Five Things To Do

- Crater Rim drive tour
- Camping
- Biking
- Hiking
- Lava viewing



Why I Chose This Park

Because I love volcanoes!



Denali National Park



Location



Date Opened

February 26, 1990



Known For

For being the tallest mountain peak



6 million **Size** acres!



When To Visit

All year around

Winter



Spring

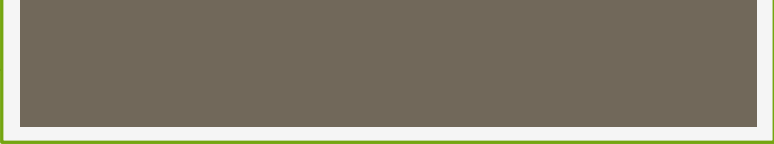


Fall



Summer





Five in to See

Wild life



Amazing plants



Dog kennels



Northern lights

Snow

Five Things To Do

Mountaineering



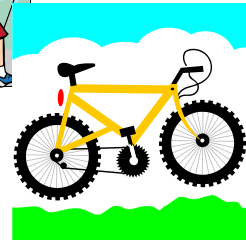
A Denali backpacking guide



Day hiking



Biking



Mushing

Why I Chose This Park

Because our class learned about it.



Rocky Mountains National Park

By:
Halle



Location

Colorado



Date Opened

February 26, 1919



Known For

It is famous for its tall Rocky Mountains



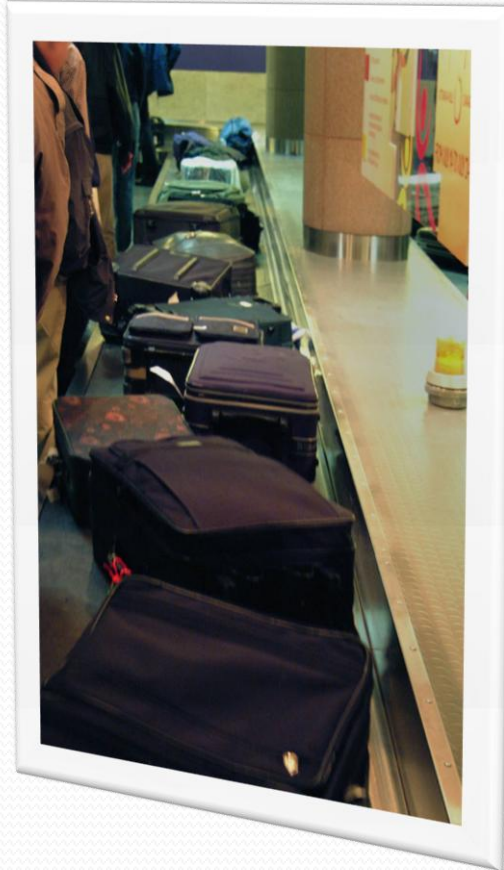
Size

265,828,41 acres



When To Visit

The park is open 24 hours a day year-round



Five Things to See

Mountains

Animals

Look at the Colorado River

Wildflowers

Lakes and waterfalls



Five Things To Do

Horseback riding

Snowshoeing and cross country skiing

Wildlife viewing

Visitor centers

Day hiking



Why I Chose This Park

Because I went there and had a blast!



MT. RAINIER NATIONAL PARK

By : Kylie



Location

- ▣ Seattle, Washington



Date Opened

- ▣ March 2, 1899



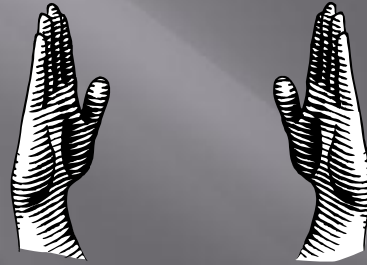
Known For

- ▣ Mt. Rainer stands as the tallest mountain in Washington



Size

▣ 235,625 acres



When To Visit

- ▣ 9:00 am to 4:00 pm all year.



Five Things to See

- ▣ Mountains
- ▣ Mountains at sunrise
- ▣ Meadow in summer
- ▣ Ohanapecosh (it`s a forest)
- ▣ Carbon and Mowich (developed areas)



Five Things To Do

- ▣ Winter camping
- ▣ Sledding
- ▣ Hiking
- ▣ Climbing
- ▣ Camping



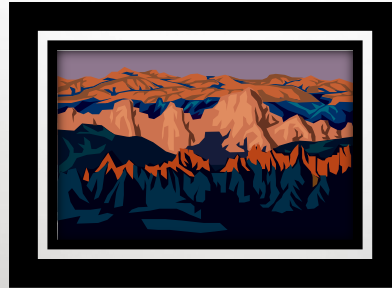
Why I Chose This Park

- ▣ It's beautiful
- ▣ Also fun



BLACK CANYON OF THE GUNNISON NATIONAL PARK

By: Lauren



LOCATION

❖ Colorado



DATE OPENED

❖ October 21, 1999

1999

The year '1999' is rendered in a large, bold, black, rounded font. The numbers are decorated with several flowers: two red flowers with white centers and green leaves are placed on the first and second '9's, and several smaller yellow flowers with green leaves are scattered throughout the numbers.

KNOWN FOR

- ❖ Rafting and rock climbing



SIZE

❖ 32,950.03 acres



WHEN TO VISIT

- ❖ Fall, winter, spring: 8:30 am – 4:00 pm
- ❖ Summer: 8:30 am- 6:00 pm



FIVE THINGS TO SEE

1. The canyon
2. Steep descent
3. The Gunnison River
4. Rocks
5. The Canyon walls that look black



FIVE THINGS TO DO

1. Camping
2. Routes to the river
3. Hiking along the rim
4. Fishing at the Gunnison River
5. Hiking the mountains



WHY I CHOSE THIS PARK

- ❖ Because it has tall mountains



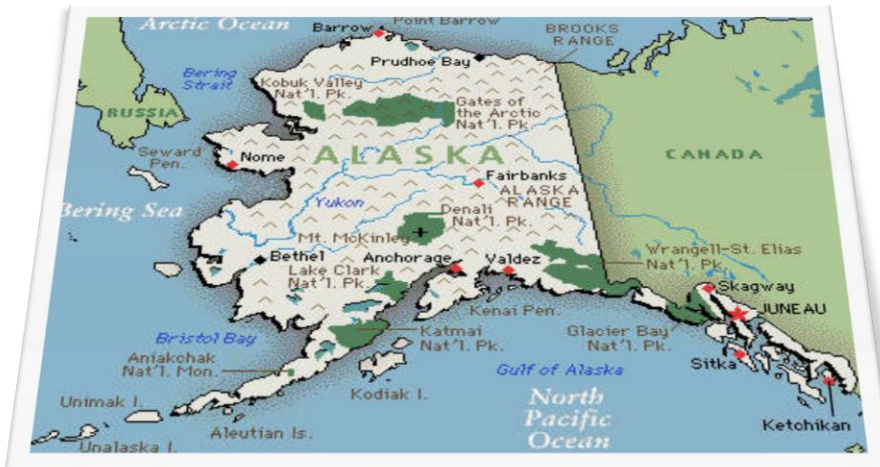
LAKE CLARK NATIONAL PARK

By:
Lizzy



LOCATION

○ Alaska



DATE OPENED

◉ December 2, 1980



KNOWN FOR

It is famous for volcanoes, steam, salmon runs and bears foraging



SIZE

- The size of my park is 2,619,733 21 acres



WHEN TO VISIT

All year



FIVE THINGS TO SEE

- Peregrine falcons
- Brown bears
- Wildlife
- Fish
- Backpackers



FIVE THINGS TO DO

- ⦿ Kayaking
- ⦿ Camping
- ⦿ Backpacking
- ⦿ Day hiking
- ⦿ Fishing



WHY I CHOSE THIS PARK

- I picked this park because there are very cool things to do.



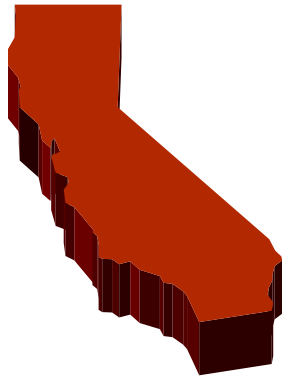


By:
Nolan

Death Valley National Park

Location

California



Date Opened

October 1994



Known For

Hottest, driest, lowest desert



Size

5,219 square miles



When To Visit

8:00 am-5:00 pm, June-October



Five Things to See

Sand dunes

Snow capped mountains

Multi-colored rock colors

Water-fluted canyons

Animals



Five Things To Do

Hiking

Sight seeing

Climb the snow capped mountains

Climb the sand dunes

Watch the 20 minute program



Why I Chose This Park

Because it has death in it

